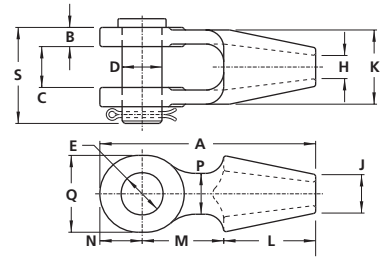


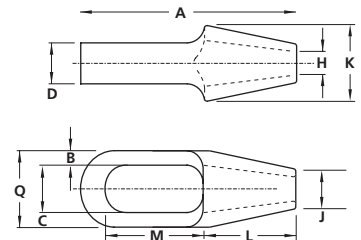
## OPEN SPELTER SOCKETS



STRAND DIA.	ROPE DIA.	A	B	C	Ø D	Ø E	Ø H	Ø J	K	L	M	N	P	Q	S	WT Lbs.
1/2	9/16 – 5/8	6.75	0.56	1.25	1.19	1.25	0.69	1.13	2.38	3.00	2.56	1.25	1.25	2.25	3.06	4
9/16 – 5/8	3/4	7.94	0.69	1.50	1.38	1.44	0.81	1.38	2.74	3.50	3.00	1.44	1.50	2.63	3.44	7
11/16 – 3/4	7/8	9.25	0.81	1.75	1.63	1.69	1.00	1.63	3.25	4.00	3.50	1.75	1.75	3.25	3.94	10
13/16 – 7/8	1	10.56	0.94	2.00	2.00	2.06	1.13	1.75	3.75	4.50	4.00	2.06	2.00	3.75	4.63	15
15/16 – 1	1-1/8	11.88	1.00	2.25	2.25	2.31	1.25	1.94	4.25	5.06	4.50	2.31	2.38	4.13	5.13	23
1-1/16 – 1-1/8	1-1/4 – 1 3/8	13.06	1.13	2.50	2.50	2.56	1.50	2.19	4.69	5.38	5.00	2.69	2.88	4.63	5.81	33
1-3/16 – 1-1/4	1-1/2	15.13	1.19	3.00	2.75	2.81	1.63	2.75	5.38	6.00	6.00	3.13	3.00	5.38	6.25	43
1-5/16 – 1-3/8	1-5/8	16.25	1.31	3.00	3.00	3.06	1.75	2.88	5.63	6.50	6.50	3.25	3.25	5.75	6.50	52
1-7/16 – 1-5/8	1-3/4 – 1-7/8	18.38	1.63	3.50	3.50	3.56	2.00	3.13	6.25	7.50	7.00	3.88	3.88	6.50	7.63	83
1-11/16 – 1-3/4	2 – 2-1/8	21.75	1.81	4.00	3.75	3.81	2.25	3.75	7.50	8.50	9.00	4.25	4.25	7.25	8.88	127
1-13/16 – 1 7/8	—	21.75	1.81	4.00	4.00	4.06	2.25	3.75	7.50	8.50	9.00	4.25	4.25	7.25	9.00	130
1-15/16 – 2	2-1/4 – 2-3/8	23.75	2.13	4.50	4.25	4.31	2.50	4.00	8.38	9.00	10.00	4.75	4.38	8.00	10.00	178
2-1/16 – 2-1/8	—	23.75	2.13	4.50	4.50	4.56	2.50	4.00	8.38	9.00	10.00	4.75	4.38	8.00	10.00	184
2-3/16 – 2-1/4	2-1/2 – 2-5/8	26.00	2.38	5.00	4.75	4.81	2.88	4.50	9.25	9.75	11.00	5.25	4.75	8.50	11.25	236
2-5/16 – 2-3/8	2-3/4 – 2-7/8	28.25	2.88	5.25	5.00	5.06	3.13	5.31	10.13	11.50	11.50	5.25	5.25	9.00	12.50	315
2-7/16 – 2-9/16	3 – 3-1/8	29.75	3.00	5.75	5.25	5.31	3.38	7.50	10.75	12.50	11.50	5.75	5.50	9.50	13.25	424
2-5/8 – 2-3/4	3-1/4	30.50	3.00	6.00	5.75	5.81	3.50	7.38	11.50	12.50	12.00	6.00	5.50	9.75	13.50	484
2-7/8 – 3	3-3/8	31.75	3.13	6.25	6.00	6.06	3.63	7.63	11.50	12.50	12.00	7.25	6.00	12.00	14.25	558
3-1/8 – 3-1/4	3-1/2	32.50	3.25	6.75	6.50	6.56	3.88	8.25	12.25	13.25	12.50	6.75	7.00	11.25	15.00	627
3-3/8 – 3-1/2	3-5/8	34.75	3.38	7.25	6.75	6.81	4.00	8.63	13.25	14.00	13.00	7.75	7.25	11.75	15.63	734
3-5/8 – 3-3/4	3-3/4 – 4	36.25	3.50	7.50	7.00	7.06	4.25	9.25	14.25	15.00	13.50	7.75	7.50	13.00	16.25	844
3-7/8 – 4	4-1/8	38.75	3.63	8.00	7.25	7.31	4.50	9.75	14.50	15.50	14.25	9.00	8.00	14.50	17.00	999
4-1/8 – 4-3/8	4-1/4 – 4-1/2	44.38	3.88	8.25	7.25	7.31	5.25	9.50	16.00	18.50	16.50	9.38	8.50	15.00	17.25	1217
4-1/2 – 4-3/4	4-3/4 – 5	46.25	4.00	8.50	7.50	7.56	5.50	10.50	16.50	19.00	17.25	10.00	8.50	16.00	18.13	1405
4-7/8 – 5-1/8	5-1/4 – 5-1/2	49.25	4.50	8.75	8.00	8.06	6.00	11.00	17.15	21.00	18.00	10.25	9.00	16.50	19.00	1645
5-1/4 – 5-1/2	5-3/4 – 6	52.63	4.88	9.00	8.75	8.81	6.38	12.00	18.75	22.50	19.00	11.13	10.00	18.00	20.00	2090

All dimensions are in inches.

## CLOSED SPELTER SOCKETS



STRAND DIA.	ROPE DIA.	A	B	C	D	H	J	K	L	M	Q	WT Lbs.
1/2	9/16 – 5/8	6.38	0.63	1.38	1.00	0.69	1.19	2.38	3.00	2.50	2.63	3
9/16 – 5/8	3/4	7.63	0.69	1.63	1.25	0.81	1.31	2.75	3.50	3.06	3.00	5
1-1/16 – 3/4	7/8	8.88	0.88	1.88	1.50	1.00	1.50	3.13	4.00	3.56	3.63	9
1-3/16 – 7/8	1	10.00	0.94	2.25	1.75	1.13	1.75	3.75	4.50	4.06	4.13	12
15/16 – 1	1-1/8	11.13	1.00	2.50	2.00	1.25	2.00	4.13	5.00	4.56	4.50	17
1-1/16 – 1-1/8	1-1/4 – 1-3/8	12.31	1.13	2.75	2.19	1.50	2.25	4.75	5.50	4.94	5.00	22
1-3/16 – 1-1/4	1-1/2	14.00	1.13	3.13	2.50	1.63	2.75	5.25	6.00	6.00	5.38	30
1-5/16 – 1-3/8	1-5/8	15.13	1.25	3.25	2.75	1.81	3.00	5.50	6.50	6.50	5.75	35
1-7/16 – 1-5/8	1-3/4 – 1-7/8	17.38	1.50	3.69	3.00	2.13	3.13	6.38	7.38	7.88	6.69	52
1-11/16 – 1-3/4	2 – 2-1/8	19.75	1.91	3.81	3.25	2.25	3.75	7.28	8.50	8.81	7.63	86
1-13/16 – 1-7/8	2-1/4 – 2-3/8	21.63	2.06	4.38	3.69	2.56	4.50	8.25	9.00	9.75	8.50	116
1-15/16 – 2	2-1/2 – 2-5/8	24.75	2.13	5.50	4.00	2.88	5.25	9.25	10.50	10.69	9.75	170
2-3/16 – 2-7/16	2-3/4 – 2-7/8	26.25	2.25	6.25	4.88	3.25	6.00	10.00	11.50	11.00	10.75	228
2-1/2 – 2-5/8	3 – 3-1/8	28.00	2.50	6.75	5.25	3.63	6.63	10.75	12.50	11.38	11.75	297
2-3/4 – 2-7/8	3-1/4 – 3-3/8	28.50	2.50	7.25	5.75	3.88	6.88	11.50	12.50	11.63	12.25	326
3 – 3-1/8	3-1/2 – 3-5/8	30.75	2.63	7.75	6.25	4.00	7.50	12.50	13.50	12.63	13.00	410
3-1/4 – 3-5/8	3-3/4 – 4	32.25	2.88	8.50	7.00	4.50	8.00	12.75	15.00	12.94	14.25	535
3-3/4 – 4	4-1/4 – 4-1/2	35.50	3.25	9.00	7.75	4.88	8.25	14.25	16.50	14.50	15.50	615
4-1/4 – 4-1/2	4-3/4 – 5	42.38	3.50	10.50	8.25	5.38	9.25	16.00	21.00	16.00	17.50	940
4-3/4 – 5	5-1/4 – 5-1/2	47.25	3.75	11.50	8.75	5.88	9.75	17.25	23.00	18.50	19.00	1180
5-1/4 – 5-1/2	5-3/4 – 6	52.00	4.25	13.00	9.00	6.38	11.00	19.00	25.00	20.00	21.50	1600

All dimensions are in inches.