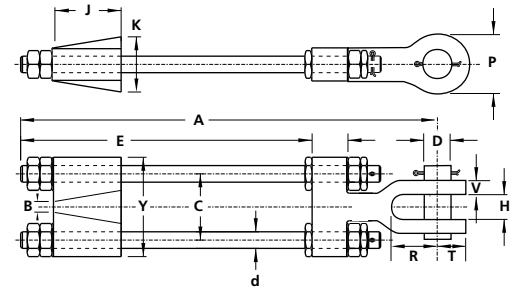




OPEN TAKE-UP ASSEMBLIES

72" Adjustment

(also available with 24", 36", 48" & 96" take-ups)



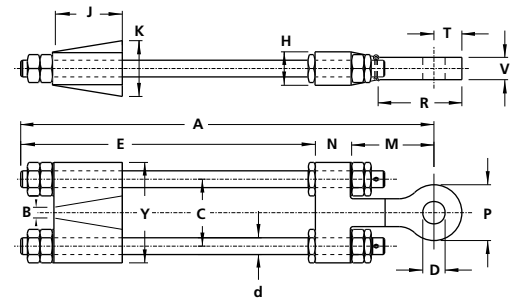
STRAND DIA.	A	B	C	d	D	E	H	J	K	P	R	T	V	Y	WT Lbs.
1/2	84.44	0.68	3.38	0.63	1.19	79.06	1.25	3.12	2.12	2.50	2.50	1.38	0.63	4.62	24
9/16 - 5/8	85.99	0.81	4.38	0.75	1.38	79.36	1.50	3.81	2.50	2.75	3.00	1.63	0.75	5.88	38
11/16 - 3/4	90.98	1.00	4.68	1.00	1.63	82.98	1.75	4.44	3.30	3.25	3.51	1.88	1.00	6.56	59
13/16 - 7/8	92.70	1.13	5.18	1.12	2.00	84.57	2.00	5.06	3.75	4.00	4.00	2.25	1.13	7.31	82
15/16 - 1	93.93	1.25	5.75	1.25	2.25	83.93	2.25	5.81	4.12	4.50	4.50	2.63	1.25	8.18	114
1-1/16 - 1-1/8	96.06	1.50	6.00	1.38	2.50	84.68	2.50	6.00	4.50	5.00	5.00	2.88	1.38	8.62	142
1-3/16 - 1-1/4	99.46	1.63	6.75	1.50	2.75	86.08	3.00	6.38	4.88	5.50	6.00	3.13	1.63	9.75	191
1-5/16 - 1-3/8	101.90	1.75	7.19	1.75	3.00	87.65	3.00	6.94	5.38	6.00	6.50	3.38	1.75	10.38	243
1-7/16 - 1-1/2	104.76	1.88	8.13	2.00	3.50	88.88	3.50	7.31	6.50	7.00	7.00	4.00	2.00	11.88	339
1-9/16 - 1-3/4	106.47	2.13	9.00	2.25	3.75	90.10	4.00	8.13	7.25	7.50	7.00	4.50	2.25	13.13	462
1-13/16 - 2	112.91	2.50	10.25	2.50	4.25	93.16	4.50	9.31	8.00	8.50	9.50	5.00	2.50	14.63	642
2-1/16 - 2-1/4	116.04	3.00	11.50	2.75	4.75	94.16	5.00	10.88	9.00	9.50	10.00	5.50	2.75	16.44	905
2-5/16 - 2-3/8	120.54	3.13	12.69	3.00	5.00	96.17	5.38	11.81	9.75	10.00	11.25	5.75	3.00	18.00	1121
2-7/16 - 2-5/8	123.11	3.38	13.38	3.25	5.75	97.36	6.00	12.81	10.50	11.50	11.50	6.63	3.25	19.25	1425
2-11/16 - 2-3/4	127.36	3.50	14.06	3.50	5.75	100.74	6.25	13.38	11.38	11.50	11.50	6.63	3.50	21.13	1689
2-7/8 - 3	131.05	3.63	15.25	3.75	6.75	102.05	7.50	15.50	12.25	13.50	12.00	7.63	3.75	22.00	2144
3-1/8 - 3-1/4	135.62	3.88	17.25	4.00	7.00	106.12	7.75	17.13	13.00	14.50	12.50	8.25	4.00	24.50	2649
3-3/8 - 3-1/2	141.18	3.94	18.31	4.25	7.25	109.05	8.00	19.31	13.88	15.00	13.00	8.50	4.25	26.06	3242
3-5/8 - 3-3/4	143.93	4.25	19.38	4.50	7.50	110.43	8.25	21.13	14.75	16.00	13.50	9.00	4.50	27.13	3872
3-7/8 - 4	148.06	4.50	20.44	4.75	7.88	112.80	8.50	22.94	15.75	17.00	14.25	9.63	4.75	29.44	4531

All dimensions are in inches. Forged Eye type also available.

CLOSED TAKE-UP ASSEMBLIES

72" Adjustment

(also available with 24", 36", 48" & 96" take-ups)



STRAND DIA.	A	B	C	d	D	E	H	J	K	P	R	T	V	Y	WT Lbs.
1/2	84.31	0.68	3.38	0.63	1.25	79.06	1.38	3.12	2.12	2.50	4.00	1.25	1.00	4.62	22
9/16 - 5/8	85.49	0.81	4.38	0.75	1.44	79.36	1.56	3.81	2.50	3.25	4.50	1.63	1.13	5.88	34
11/16 - 3/4	89.82	1.00	4.68	1.00	1.69	82.76	2.25	4.44	3.30	3.63	5.00	1.81	1.44	6.56	61
13/16 - 7/8	92.39	1.13	5.18	1.12	2.06	84.14	2.69	5.06	3.75	4.38	6.00	2.19	1.56	7.31	84
15/16 - 1	93.50	1.25	5.75	1.25	2.31	83.56	2.50	5.81	4.12	5.25	6.62	2.63	1.69	8.18	115
1-1/16 - 1-1/8	95.87	1.50	6.00	1.38	2.56	84.43	2.56	6.00	4.50	5.75	7.50	2.88	1.81	8.62	139
1-3/16 - 1-1/4	98.65	1.63	6.75	1.50	2.81	85.27	3.00	6.38	4.88	6.38	9.00	3.19	2.06	9.75	193
1-5/16 - 1-3/8	101.65	1.75	7.19	1.75	3.06	86.71	3.25	6.94	5.38	7.00	10.00	3.50	2.38	10.38	255
1-7/16 - 1-1/2	103.83	1.88	8.13	2.00	3.56	87.89	3.50	7.31	6.50	8.00	11.00	4.00	2.56	11.88	342
1-9/16 - 1-3/4	105.60	2.13	9.00	2.25	3.81	89.22	4.38	8.13	7.25	9.00	11.50	4.50	2.81	13.13	474
1-13/16 - 2	110.72	2.50	10.25	2.50	4.56	91.97	4.50	9.31	8.00	10.38	12.50	5.50	3.06	14.63	663
2-1/16 - 2-1/4	111.97	3.00	11.50	2.75	4.81	93.22	5.13	10.88	9.00	12.25	13.25	6.13	3.31	16.44	856
2-5/16 - 2-3/8	116.17	3.13	12.69	3.00	5.06	95.54	6.31	11.81	9.75	12.50	14.96	6.25	3.69	18.00	1040
2-7/16 - 2-5/8	118.80	3.38	13.38	3.25	5.81	96.80	6.88	12.81	10.50	13.50	17.31	7.75	4.00	19.25	1319
2-11/16 - 2-3/4	124.31	3.50	14.06	3.50	5.81	100.68	6.69	13.38	11.38	14.50	19.25	8.00	4.19	21.13	1568
2-7/8 - 3	131.68	3.63	15.25	3.75	6.81	101.68	7.00	15.50	12.25	16.00	20.25	9.25	4.50	22.00	2056
3-1/8 - 3-1/4	137.43	3.88	17.25	4.00	7.06	105.99	8.25	17.13	13.00	18.00	24.00	11.00	4.75	24.50	2518
3-3/8 - 3-1/2	142.18	3.94	18.31	4.25	7.31	109.18	8.38	19.31	13.88	18.00	25.00	11.00	5.00	26.06	3052
3-5/8 - 3-3/4	143.93	4.25	19.38	4.50	7.56	110.43	9.38	21.13	14.75	18.00	25.25	11.63	5.25	27.13	3495
3-7/8 - 4	148.80	4.50	20.44	4.75	7.81	112.80	9.75	22.94	15.75	20.00	26.00	12.25	5.50	29.44	4170

All dimensions are in inches. "U" Bolt & Spool type also available.